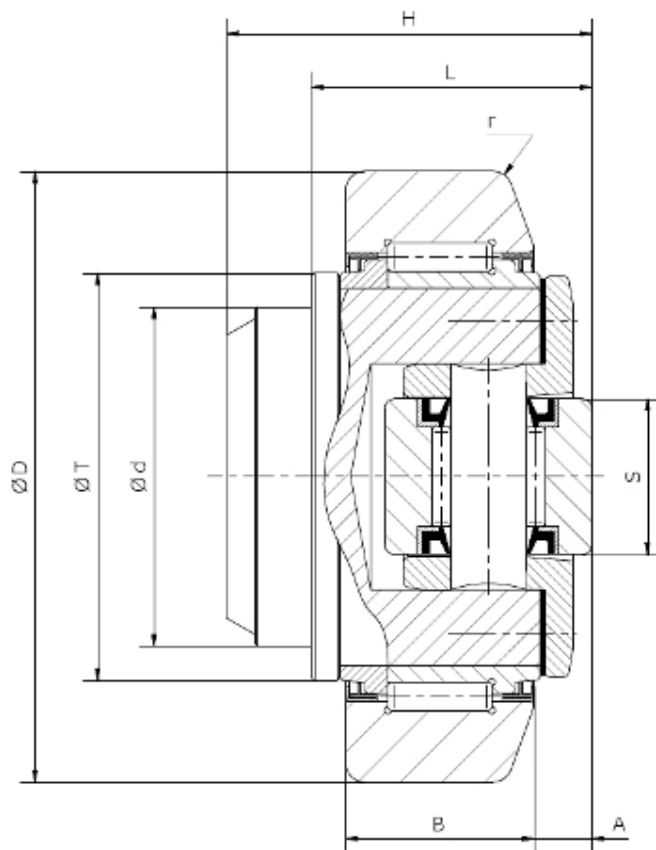



ADJUSTABLE COMBINED BEARINGS



MATERIAL	
External rings	STEEL UNI 17MnCr5 DIN 17MnCr5 / WNr.1.3521 (CTRs 58±60HRc)
Interior rings	STEEL UNI 100Cr6 DIN 100Cr6/ WNr.1.3505 (TRs 60±62 HRc)
Rolling bodies	STEEL UNI 100Cr6 DIN 100Cr6/ WNr.1.3505 (TRs 61±63 HRc)
Main pin	UNI Fe510.C DIN St 52.3/ WNr. 1.0553
DIMENSIONAL TOLERANCES, RADIAL CLEARANCE, LOAD CAPACITY	
Processing tolerance	On DIN 620.
Precision class	P "O".
Radial clearance	On DIN 620.
Load factors	Calculated on DIN - ISO 281/1/ DIN - ISO 76.

	Size									Load capacity				Weight KG	PROFILE-TYPE
	TYPE 2 ZRS	d mm	D mm	H mm	T mm	L mm	B mm	A mm	S mm	r mm	C KN	C ₀ KN	C _A KN		
MR.146	30	62	43	42	33	20	5,5	16	3	31	35,5	8	8	0,56	EC062 (2890)
MR.147	35	70,1	48	48	40	23	6,5	16	4	45,5	51	8	8	0,85	EC070 (2867)
MR.148	40	77,7	50,5	54	39,5	23	7	21	4	48	56,8	14	14	1,02	EC078 (2810)
MR.149	40	78,1	45	54	34	23	7	21	4	48	56,8	14	14	0,92	ET078 (3019)
MR.150	45	88,4	61	59	48	30	7	21	3	68	72	15	15	1,70	EC089 (2811)
MR.151	50	101,9	50,5	67	37,5	28	7	21	3	73	82	18	19	1,85	(2912)
MR.142	60	107,7	69	71	55	31	8	33	5	81	95	31	36	2,80	EC108 (2862)
MR.152	55	108,5	58,5	71	44,5	31	8	33	5	81	95	31	36	2,40	ET108 (3100)
MR.153	60	123	75,8	80	59,5	37	8	33	5	110	132	31	36	4,08	EC123 FI123 (2891)
MR.154	60	149	89	103	69	43	15	50	5	151	192	68	71	6,70	FI149 EC149 (2757)

The adjustment of the dimension "A" is made with rings shims inserted between the main support and the support of guide bearing side.
Ring are available for registration with thicknesses of 0.5, 1 mm.